

A group of four diverse students (three women and one man) are sitting on a grassy lawn in front of a brick building. They are engaged in a study session, looking at a laptop and an open book. The man is pointing at the laptop screen. The woman next to him is holding an open book. The other two women are looking on. A spiral notebook is on the grass in front of them. The background shows a brick building and trees.

# LEARNING COMMUNITIES

**FOR PRE-MAJORS**  
**2023**

SUNY  
*Cortland*





## Welcome to SUNY Cortland

We are excited to welcome you as a SUNY Cortland pre-major! We look forward to guiding and supporting you on your journey as a student who has not yet chosen a particular area of study. Starting your academic career as a pre-major is a great way to explore the many options available to you.

For your first semester, we offer a variety of learning community experiences that cover a range of interests. You'll enroll in courses that fulfill General Education and All-College requirements and explore themes such as science, human behavior and society, education, world cultures, recreation, the environment, and peace and social justice.

In a learning community, you won't be just another student in an introductory class. You'll be enrolled in two to three linked courses that address common themes with about 22 other students who have similar interests. You, your classmates and your professors will get to know one another as you explore opportunities at Cortland.

As a pre-major, you also will have a professional advisor from Advisement and Transition providing ongoing support and resources to assist you in identifying your academic interests and career aspirations. We are here to help you and answer questions as you continue to explore your strengths and interests while finding a major that aligns with your goals.

Take some time to read through the learning community options and identify your preferences. Once again, welcome to SUNY Cortland. We look forward to you joining us.

Advisement and Transition





## Your next steps

Read through all of the program descriptions in this document and rank your learning community choices in order of preference. You will provide this information when you sign up for Orientation. Placement is on a first-come, first-served basis.

Complete the following steps to sign up for Orientation and indicate your learning community preferences.

1. Log in to myRedDragon.
2. Select Admissions from the options in the top header.
3. Go to the Orientation box to sign up, which includes:
  - Indicating your learning community preferences. You will be informed of your placement during summer Orientation.
  - Providing information about college credit earned while in high school through AP, IB or dual enrollment with a college.

During Orientation, you will meet with a faculty advisor and set your first semester schedule. It will include your learning community coursework, other General Education courses and COR 101: The Cortland Experience, which is designed to help you transition to Cortland's academic community. Other courses will be added to complete a full semester schedule.



FALL 2023

## Learning Communities

FOR PRE-MAJORS



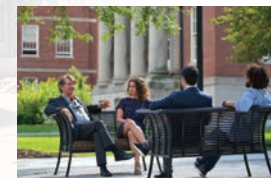
4

**Building Community  
Through Recreation**



6

**Earth and  
Environment**



8

**Happiness and  
Society**



10

**Molecular World**



12

**Philosophy and  
Education**



14

**Play Across  
Cultures**



16

**World First**





### Consider this learning community if you:

- Like helping people
- Enjoy being outdoors
- Are excited about the opportunity to spend a weekend in Cortland's camp in the Adirondacks



## Building Community Through Recreation

Recreation is active engagement in freely chosen, meaningful activity to promote well-being. By connecting individuals with common interests, recreation builds relationships and is the key to creating a healthy community. Students who develop connections with others and to campus are more successful in and out of the classroom.

You will have the opportunity to create your own sense of community by not only sharing three courses, but also by participating in an overnight weekend field trip to SUNY Cortland's William H. Parks Family Center for Environmental and Outdoor Education at Raquette Lake. This year the field trip is Friday, Sept. 15, through Sunday, Sept. 17.

In addition to COR 101, you will take REC 271: Foundations of Recreation, a liberal arts and sciences course, which introduces you to the concepts of recreation, play and leisure in your life as well as the profession of recreation and leisure services. You'll also take CPN 100: Writing Studies I, which fulfills our General Education Communication 1 category.

This learning community is a great option if you are interested in helping people, enjoy being outdoors and building community or are curious about the majors offered by our Recreation, Parks and Leisure Studies Department.



### **COR 101: THE CORTLAND EXPERIENCE** (1 CR. HR.)

### **REC 271: FOUNDATIONS OF RECREATION** (3 CR. HR.)

History, theory, philosophy of play and recreation; implications for individuals, groups in changing society.

### **CPN 100: WRITING STUDIES I** (3 CR. HR.)

An introduction to the study and practice of writing with an emphasis on critical reading and thinking skills.

### **INSTRUCTOR**

Laura Davies, *Professor, English*

N. Qwynne Lackey, *Assistant Professor, Recreation, Parks and Leisure Studies*





### Consider this learning community if you:

- Are interested in exploring the natural world
- Want to learn more about the environment
- Have a potential interest in a major in one of the sciences or adolescence education



## Earth and Environment

This learning community provides a unique opportunity for you to explore the natural world by taking classes and laboratories as a group. Classes are small and students and faculty work together. In addition to the required first-year seminar, COR 101, courses in this community fulfill General Education requirements in two categories. You should consider this program if you are interested in the earth sciences and environment.

### **COR 101: THE CORTLAND EXPERIENCE** (1 CR. HR.)

### **ENS 100: INTRODUCTION TO ENVIRONMENTAL SCIENCE** (3 CR. HR.)

Application of scientific methods to the study of the natural world and how it is influenced by people. Emphasis on understanding of local, regional and global environmental issues from an interdisciplinary perspective.

### **GLY 261: PHYSICAL GEOLOGY** (4 CR. HR.)

Principles of physical geology. Earth materials, intracrustal forces and products, agents of gradation and their physiographic expression. Laboratory study includes minerals, rocks, topographic and geologic maps, simple geologic structures.

### **INSTRUCTORS**

Robert Darling, *Distinguished Teaching Professor, Geology*

Gayle Gleason, *Associate Professor and Chair, Geology*

Samantha Howell, *Coordinator of COR 101 and Academic Advisor, Advisement and Transition*

Li Jin, *Professor, Geology; Coordinator, Environmental Science Program*







### Consider this learning community if you:

- Enjoy discussing philosophical and ethical issues
- Are eager to engage in lively discussions and interact with your peers
- Want to learn more about philosophy and a broad liberal education



## Happiness and Society

This learning community is an opportunity for you to study philosophical and ethical issues of significance to contemporary society. It will help you think, read and write critically — skills beneficial for all future courses in all disciplines. This community is also a great introduction to philosophy and the major questions of human life.

Courses have a high content of discussion and student interaction. In addition to the required first-year seminar, COR 101, courses in this community fulfill General Education requirements in two categories.



### **COR 101: THE CORTLAND EXPERIENCE** (1 CR. HR.)

### **PHI 100: INTRODUCTION TO PHILOSOPHY** (3 CR. HR.)

Introduction to subject matter and methods of philosophy. Readings include classical and contemporary writers on a range of philosophical topics including social and political philosophy, philosophy of religion, questions of metaphysics and epistemology, ethics and basic characteristics of rational inquiry.

### **PHI 135: INTRODUCTION TO ETHICS** (3 CR. HR.)

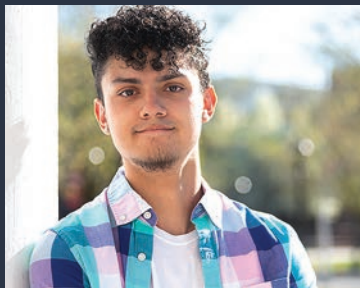
Exploration of the world's major ethical theories. Special attention is given to the science of the environment and the moral problems surrounding it. Other topics likely addressed include racial and sexual discrimination, abortion and euthanasia, and problems in bioethics and business ethics. This course looks at answers questions such as: "How should we live?" "What is a good life?" and "What is right and wrong?" You will learn how to make clear and justifiable moral arguments.

### **INSTRUCTORS**

Nikolay Karkov, *Associate Professor, Philosophy*

L. Sebastian Purcell, *Associate Professor, Philosophy*





**Consider this learning community if you:**

- Have an interest in the natural sciences
- Want the opportunity to be in a hands-on course with a lab
- Are interested in discussing the impact of science in our world



## Molecular World

Explore topics that include nanotechnology, medicine and how green technologies will benefit everyone on the planet. This learning community provides the unique opportunity for you to work in small groups of students and faculty within classroom and laboratory environments.

Classes in this learning community satisfy General Education requirements in Natural Sciences. If you are interested in biochemistry, chemistry or adolescence education in chemistry, you should join Molecular World.

**COR 101: THE CORTLAND EXPERIENCE** (1 CR. HR.)

**CHE 227: GENERAL CHEMISTRY I LECTURE** (3 CR. HR.)

Atomic theory, structure, chemical bonding. Application of thermodynamic, structural and kinetic considerations to inorganic systems. Electrochemistry, quantitative analysis, other current topics.

**CHE 277: GENERAL CHEMISTRY I LABORATORY** (1 CR. HR.)

Students will learn basic laboratory techniques in the general chemistry area and be required to keep a professional lab notebook. Concepts from General Chemistry I Lecture will be emphasized and reinforced. Fulfills the Natural Sciences General Education category when completed with CHE 227.

**CHE 224: PROBLEM-SOLVING IN GENERAL CHEMISTRY I** (1 CR. HR.)

Methods of solving problems in general chemistry: stoichiometry, atomic and molecular structure, bonding.

**INSTRUCTORS**

Gregory Phelan, *Professor and Chair, Chemistry*

Andrew Roering, *Associate Professor, Chemistry*

Sarah Wolf, *Assistant Professor, Chemistry*







### Consider this learning community if you:

- Are considering becoming a teacher
- Want to discuss the connection between education and ethics
- Interested in working with children in our local community



## Philosophy and Education

This option will allow you to consider foundational principles of education, basic approaches to ethics, and the connections between them. If you are interested in, but perhaps unsure about, a career in teaching, you will gain insights to help make an informed decision.

An alternative way into teaching, the learning community lays a strong foundation for the 4+1 program in Social Philosophy (B.A.) and Early Childhood Education (M.S.T.), enabling you to leave Cortland after five years certified to teach grades 1-6. In addition to the required first-year seminar, COR 101, courses in this community fulfill General Education requirements in two categories. This means that the courses will count toward a philosophy degree or any other major.

In Professor Nagel's Introduction to Ethics class, you will get the opportunity to teach philosophy to children in local schools and youth centers using story books. This way you will test the waters if you wish to become a teacher.



### **COR 101: THE CORTLAND EXPERIENCE** (1 CR. HR.)

### **FSA 250: FOUNDATIONS OF PEACE EDUCATION** (3 CR. HR.)

Incorporates issues of social justice, inequality and perspectives on peace to explore the role of educational practices in the perpetuation and mitigation of threats of violence. Provides a framework for understanding the need for, obstacles to and implications of peaceful practices.

### **PHI 135: INTRODUCTION TO ETHICS** (3 CR. HR.)

Exploration of the world's major ethical theories. Special attention is given to the science of the environment and the moral

problems surrounding it. Other topics likely addressed include racial and sexual discrimination, abortion and euthanasia, and problems in bioethics and business ethics. This course looks at answers questions such as: "How should we live?" "What is a good life?" and "What is right and wrong?" You will learn how to make clear and justifiable moral arguments.

### **INSTRUCTORS**

Mecke Nagel, *Professor, Philosophy and Africana Studies; Director, Center for Ethics, Peace and Social Justice.*

Joseph Rayle, *Associate Professor, Foundations and Social Advocacy*





**Consider this learning community if you:**

- Want to learn about how children play around the world
- Want to know what play can teach us about cultures around the world



## Play Across Cultures

Every day, all over the world, children play games. They jump ropes and roll marbles — even using animal knuckles. They draw games on sidewalks or in the sand; they throw balls and chase each other. They play for healthy physical, social and cognitive development; they play for fun. And when they play, culture is learned and perpetuated. This learning community is for students interested in play, children and contrasting cultures.

In addition to COR 101, you will take General Education courses REC 150: Play Across Cultures where you will “travel” to different countries so you can play the games, simulate the celebrations and perhaps even taste the foods that young people around the world are enjoying and REC 293, Diversity and Inclusive Recreation Services where you have a better understanding of the barriers that people face when participating in recreational activities. All classes fulfill a GE or All-College requirement.

### **COR 101: THE CORTLAND EXPERIENCE** (1 CR. HR.)

### **REC 150: PLAY ACROSS CULTURES** (3 CR. HR.)

Study of the similarities and differences in young people’s play and celebrations through an examination of world cultures.

### **REC 293: DIVERSITY AND INCLUSIVE RECREATION SERVICES**

Inclusive programming guidelines and consideration for eliminating barriers to leisure participation for persons with differences, such as disability, race, sex, sexual identity, class.

### **INSTRUCTORS**

N. Qwynne Lackey, *Assistant Professor, Recreation, Parks and Leisure Studies*

Jason Page, *Assistant Professor, Recreation, Parks and Leisure Studies*

Susan Wilson, *Associate Professor and Chair, Recreation, Parks and Leisure Studies*







### Consider this learning community if you:

- Want to engage in conversations about critical global issues
- Have an interest in travel and world cultures
- Want to learn how to effect real change in the world
- Seek strong connections with your peers and instructors

(Four of your six classes will be with this cohort).



## World First

World First brings together students and faculty who are concerned about global topics such as racism and multiculturalism, human rights, international violence and global economic structures, including inequality and poverty. You will explore past causes of — and future solutions to — the issues facing our world. This learning community will be a good fit if you have an interest in international issues, travel, world cultures and ethnic groups or working in international settings. Courses in this community satisfy General Education requirements in four categories.

### COR 101: THE CORTLAND EXPERIENCE (1 CR. HR.)

### IST 100: CULTURE THROUGH FILM (3 CR. HR.)

Introduction to film as an art form and to the basic narrative and stylistic aspects of film; study of film as a medium of cultural representation and expression; exploration of current and historical global themes and issues through screening, study and discussion of course films.

### HIS 101: THE WORLD SINCE 1500 (3 CR. HR.)

Explores connections between peoples and cultures in the world from 16th c. to present. Focuses on development of new economic systems, political institutions, cultures and ideologies across geographic and national boundaries. Seeks to understand globalization and interplay between local and global events.

### ANT 102: INTRODUCTION TO CULTURAL ANTHROPOLOGY (3 CR. HR.)

Subdisciplines, conceptual frameworks dealing with origins, development, diversity of human cultures.

### INSTRUCTORS

Alexandru Balas, *Associate Professor and Coordinator, International Studies Program; Director, Clark Center for Global Engagement*

Girish Bhat, *Professor, History*

Patricia Martinez, *Lecturer IV (Spanish), Modern Languages*

Sharon Steadman, *SUNY Distinguished Professor, Sociology/Anthropology*





**Advisement and Transition**

SUNY Cortland  
Memorial Library, Room A-111  
P.O. Box 2000  
Cortland, NY 13045

Phone: 607-753-4727

Fax: 607-753-5593

[cortland.edu/advisement](http://cortland.edu/advisement)



[cortland.edu/follow](http://cortland.edu/follow)

